



THE

# *Freedom*

S E R I E S

2017



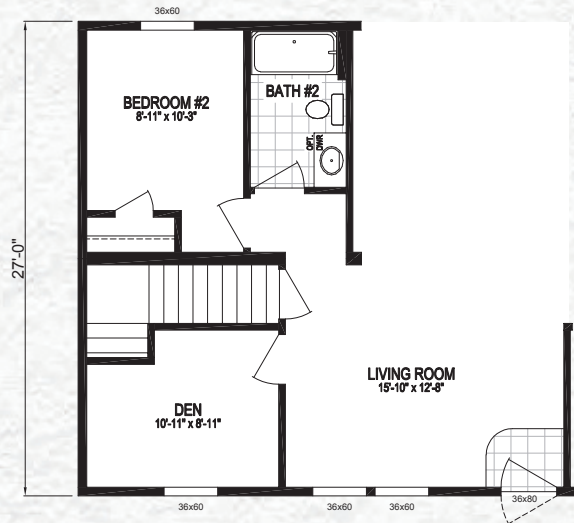
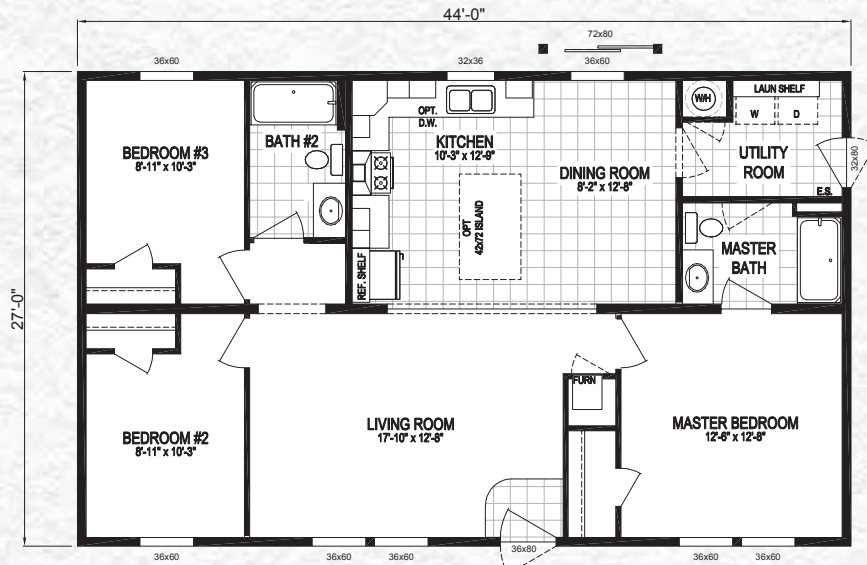
# Table of Contents

<b>Model No.</b>	★	<b>Sq. Footage</b>	★	<b>Bedrooms</b>	★	<b>Baths</b>	★	<b>Page</b>
<b>4024-9047</b>	★	<b>906</b>	★	<b>3</b>	★	<b>2</b>	★	<b>4</b>
<b>4424-9041</b>	★	<b>998</b>	★	<b>3</b>	★	<b>2</b>	★	<b>5</b>
<b>4824-9048</b>	★	<b>1,088</b>	★	<b>3</b>	★	<b>2</b>	★	<b>6</b>
<b>5224-9042</b>	★	<b>1,179</b>	★	<b>3</b>	★	<b>2</b>	★	<b>7</b>
<b>4428-F115</b>	★	<b>1,188</b>	★	<b>3</b>	★	<b>2</b>	★	<b>8</b>
<b>4828-F112</b>	★	<b>1,296</b>	★	<b>3</b>	★	<b>2</b>	★	<b>9</b>
<b>5228-F111</b>	★	<b>1,404</b>	★	<b>3</b>	★	<b>2</b>	★	<b>10</b>
<b>5228-F113</b>	★	<b>1,404</b>	★	<b>3</b>	★	<b>2</b>	★	<b>11</b>
<b>5228-F123</b>	★	<b>1,332</b>	★	<b>3</b>	★	<b>2</b>	★	<b>12</b>
<b>5628-F110</b>	★	<b>1,512</b>	★	<b>3</b>	★	<b>2</b>	★	<b>13</b>
<b>6028-F114</b>	★	<b>1,620</b>	★	<b>3</b>	★	<b>2</b>	★	<b>14</b>
<b>6028-F121</b>	★	<b>1,620</b>	★	<b>4</b>	★	<b>2</b>	★	<b>15</b>
<b>7228-F118</b>	★	<b>1,944</b>	★	<b>4</b>	★	<b>2</b>	★	<b>16</b>
<b>6614-F101</b>	★	<b>902</b>	★	<b>3</b>	★	<b>2</b>	★	<b>18</b>
<b>6016-F104</b>	★	<b>920</b>	★	<b>2</b>	★	<b>2</b>	★	<b>19</b>
<b>6616-F103</b>	★	<b>1,011</b>	★	<b>3</b>	★	<b>2</b>	★	<b>20</b>
<b>7616-F100</b>	★	<b>1,166</b>	★	<b>3</b>	★	<b>2</b>	★	<b>21</b>
<b>7616-F102</b>	★	<b>1,166</b>	★	<b>3</b>	★	<b>2</b>	★	<b>22</b>

MODEL  
NUMBER

**4428-F115**

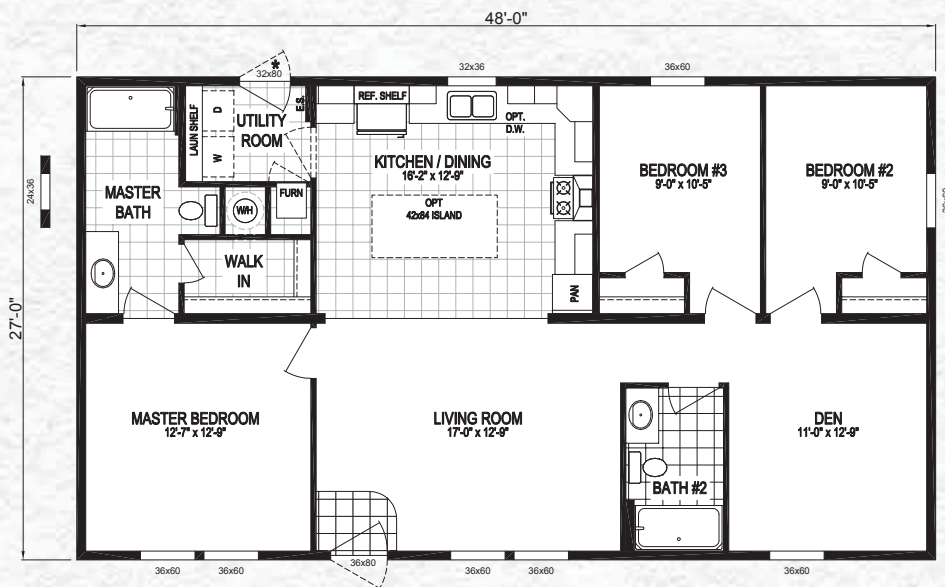
★ 1,188 sq. ft. 3 Bedroom / 2 Bath



OPTIONAL BASEMENT STAIRWELL  
(NOT AVAILABLE WITH EXT. PACKAGE)

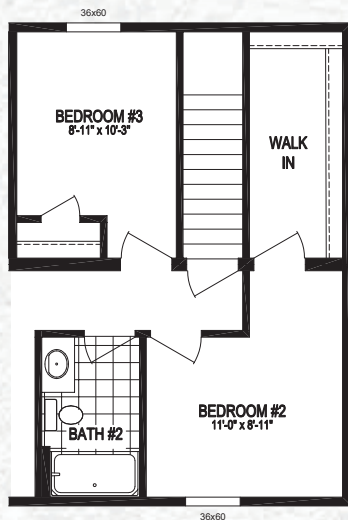
1,296 sq. ft. 3 Bedroom / 2 Bath ★ **4828-F112**

MODEL NUMBER

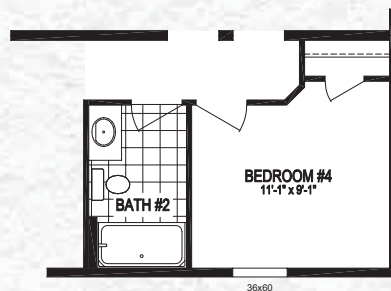


**NOTE:**  
HUD HOMES THAT HAVE A GAS WATER HEATER AND A 5/12 ROOF PITCH WILL REQUIRE AN "SC" ON SITE INSPECTION

**NOTE:**  
DOORS MARKED WITH A "\*" CANNOT HAVE THE HUD PIER SAVER SYSTEM AND WILL NEED PERIMETER BLOCKS OR ADJUSTABLE OUTRIGGERS (ON SITE IF LOCAL CODE ALLOWS)



STAIRWELL OPTION  
(MOD ONLY)

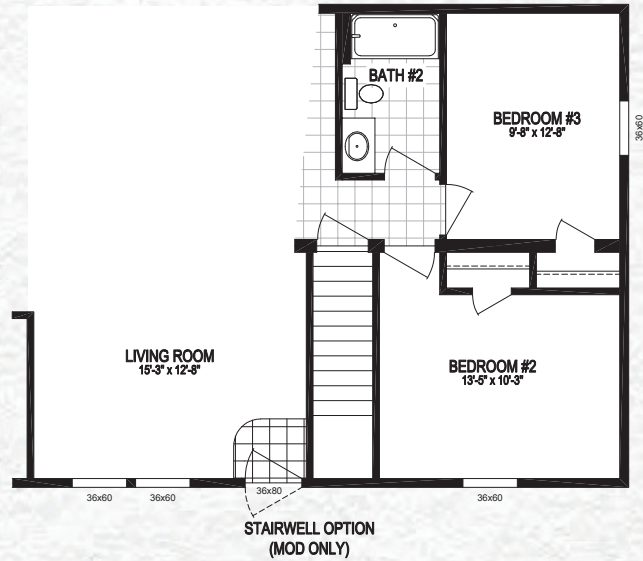
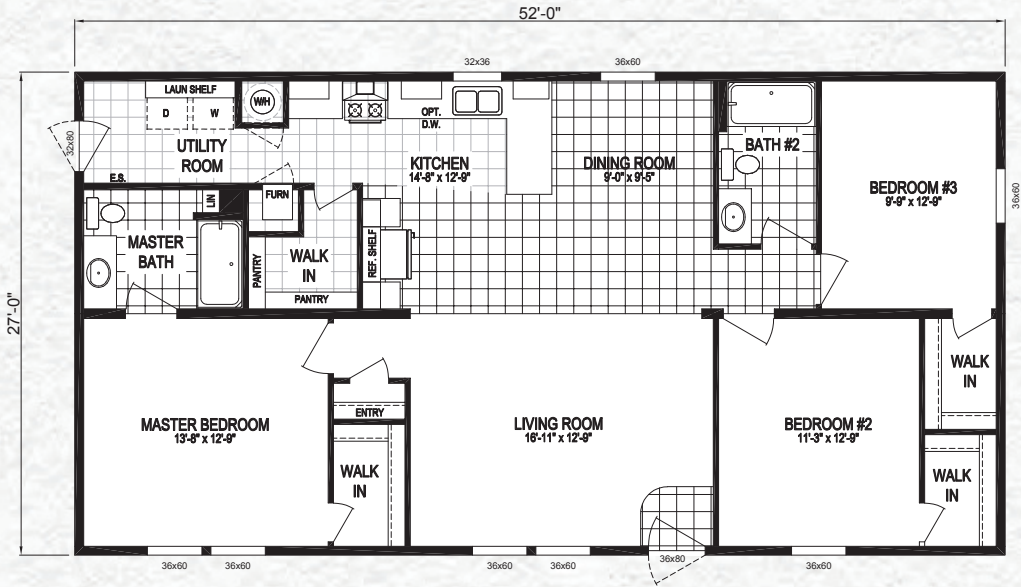


4th BEDROOM OPTION

MODEL  
NUMBER

**5228-F111**

★ 1,404 sq. ft. 3 Bedroom / 2 Bath

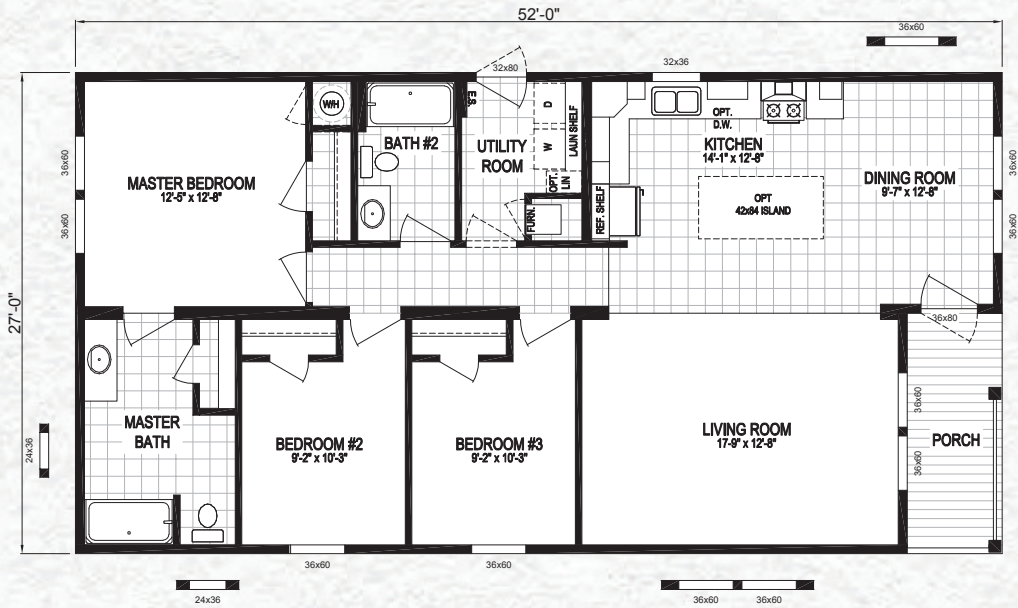




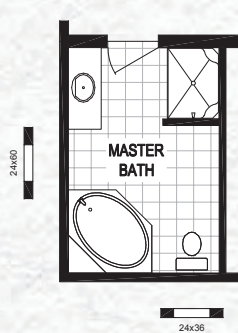
MODEL NUMBER

**5228-F123**

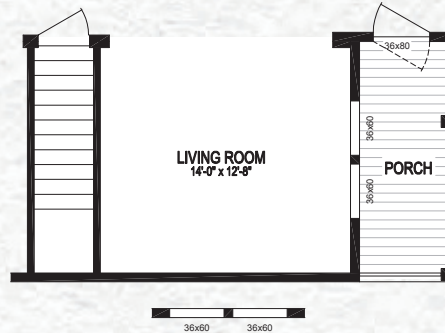
★ 1,332 sq. ft. 3 Bedroom / 2 Bath



NOTE:  
MARRIAGE LINE CLOSET UP BEAM NOT AVAILABLE ON THIS MODEL



DELUXE BATH OPTION

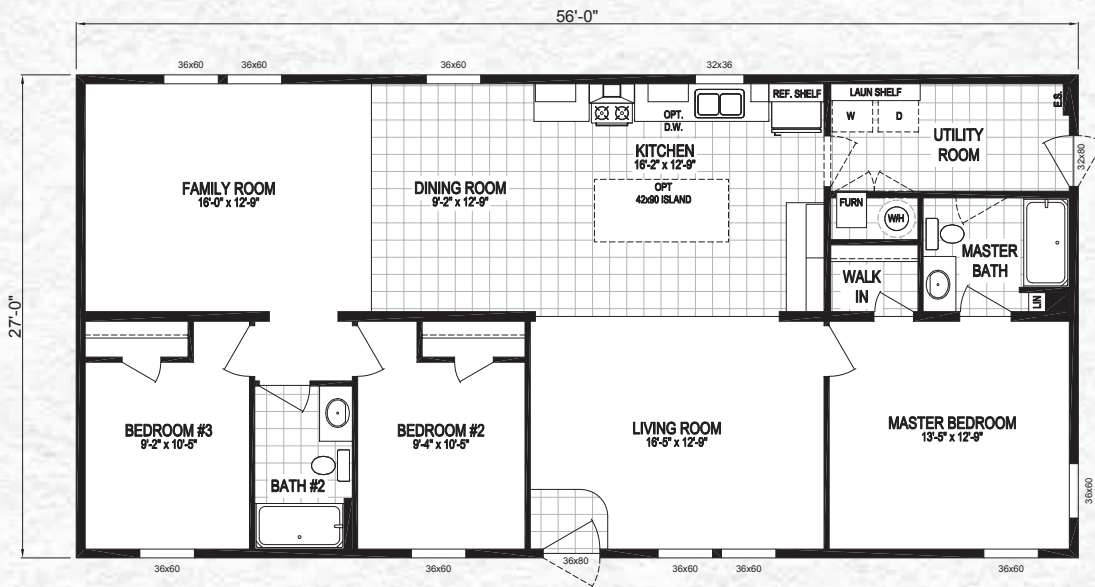


STAIRWELL OPTION  
(MOD ONLY)

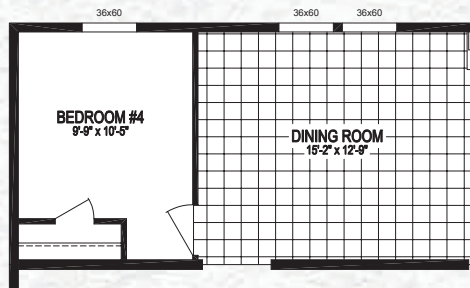
NOTE:  
MARRIAGE LINE CLOSET UP BEAM NOT AVAILABLE ON THIS MODEL

1,512 sq. ft. 3 Bedroom / 2 Bath ★ **5628-F110**

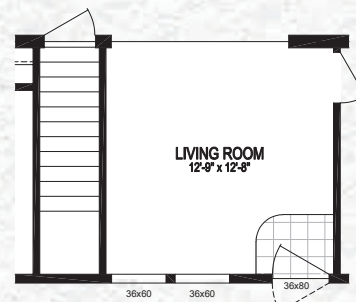
MODEL NUMBER



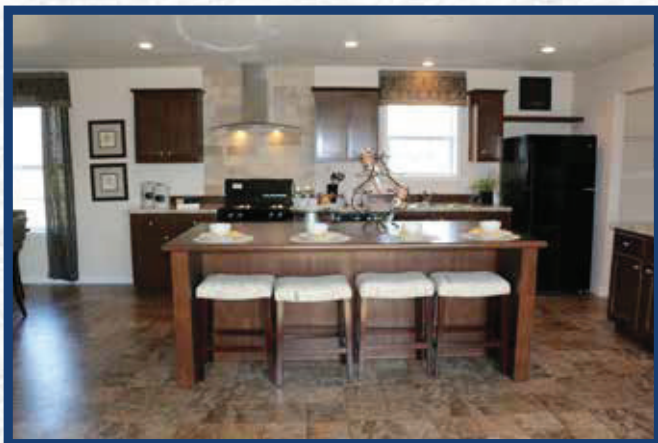
NOTE:  
HUD HOMES THAT HAVE A GAS WATER HEATER AND A 5/12  
ROOF PITCH WILL REQUIRE AN "SC" ON SITE INSPECTION



4th BEDROOM OPTION



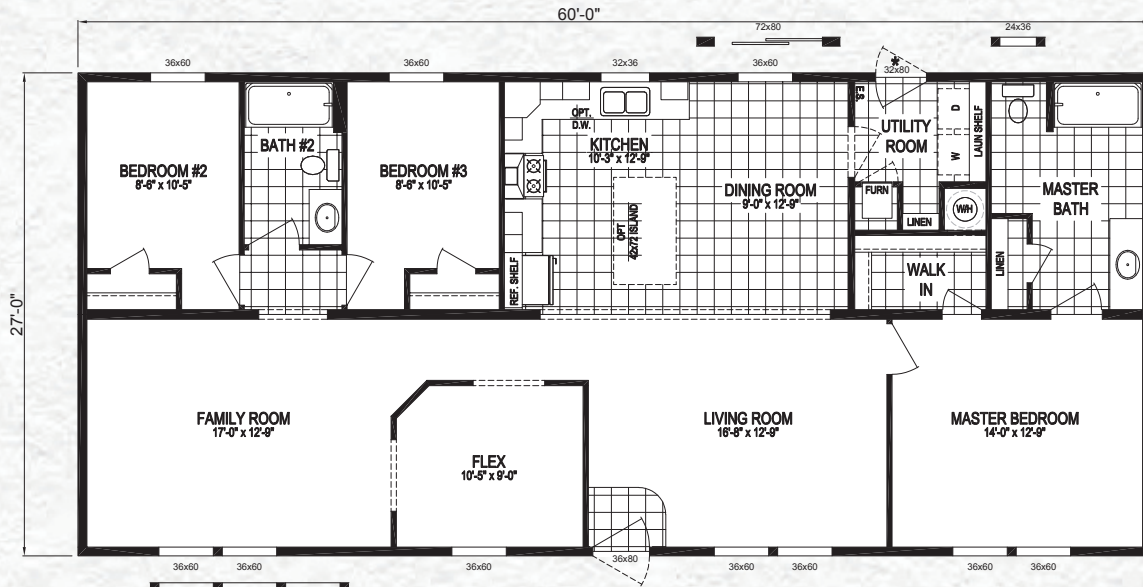
STAIRWELL OPTION  
(MOD ONLY)





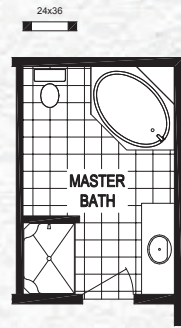
MODEL NUMBER

# 6028-F114 ★ 1,620 sq. ft. 3 Bedroom / 2 Bath

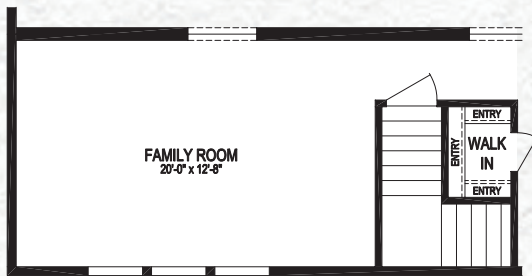


NOTE:  
HUD HOMES THAT HAVE A GAS WATER HEATER AND A 5/12 ROOF PITCH WILL REQUIRE AN "SC" ON SITE INSPECTION

NOTE:  
DOORS MARKED WITH A \* \* \* CANNOT HAVE THE HUD PIER SAVER SYSTEM AND WILL NEED PERIMETER BLOCKS OR ADJUSTABLE OUTRIGGERS (ON SITE IF LOCAL CODE ALLOWS)



DELUXE BATH OPTION

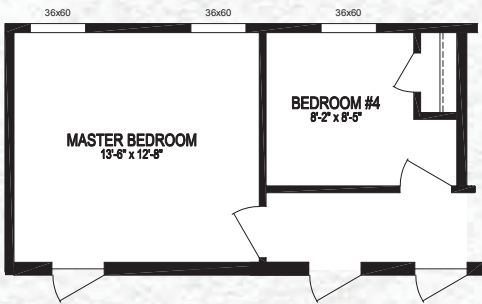
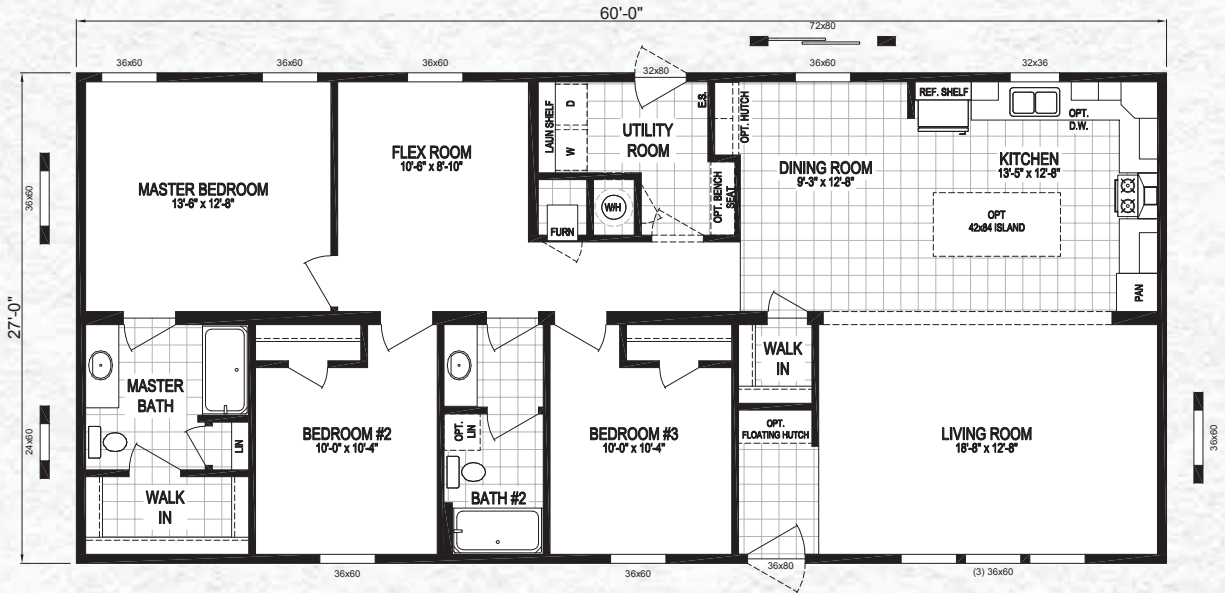


STAIRWELL OPTION (MOD ONLY)

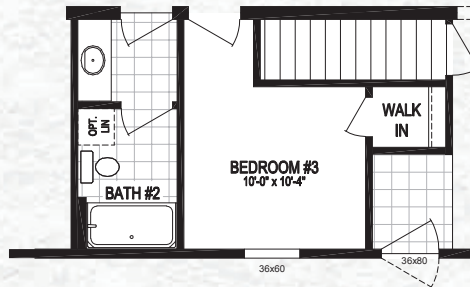


4th BEDROOM OPTION

1,620 sq. ft. 4 Bedroom / 2 Bath ★ **6028-F121**



OPTIONAL 5TH BEDROOM



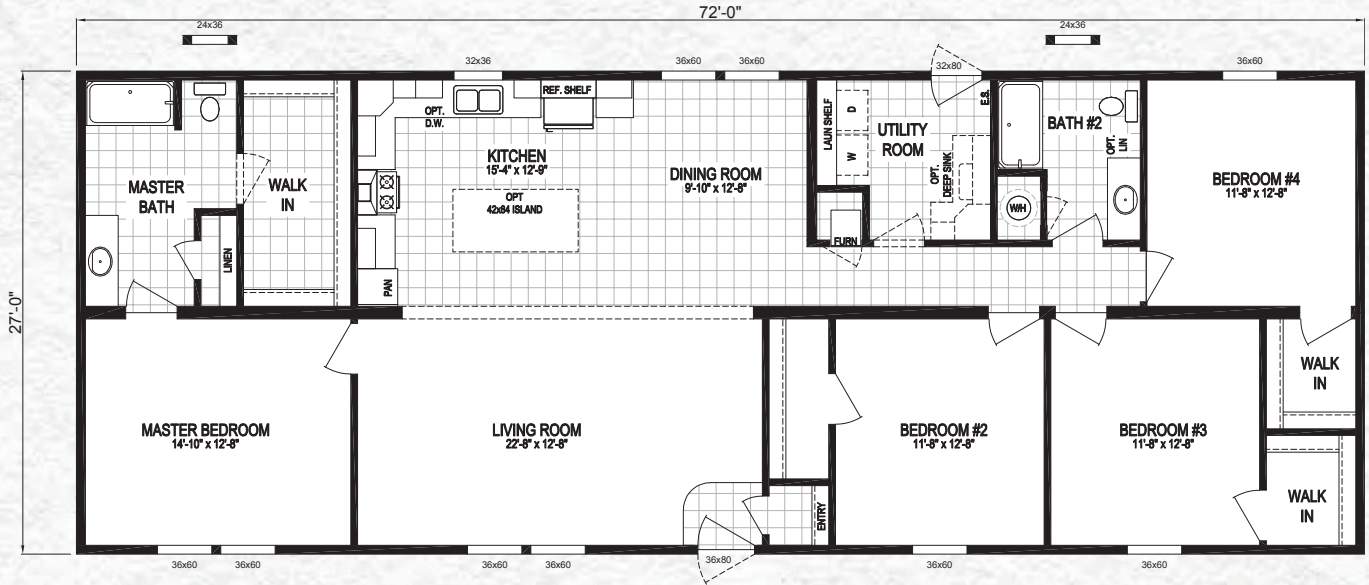
STAIRWELL OPTION  
(MOD ONLY)



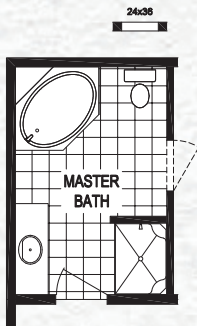
DELUXE BATH OPTION

MODEL  
NUMBER

# 7228-F118 ★ 1,944 sq. ft. 4 Bedroom / 2 Bath



NOTE:  
A GAS WATER HEATER WILL REQUIRE AN SC ON A HUD HOME



DELUXE BATH OPTION



STAIRWELL OPTION  
(MOD ONLY)



THE  
*Freedom*  
S E R I E S

**Clayton**  
middlebury

437 N. Main Street  
Middlebury, IN 46540  
Phone: 574.825.7500  
Fax: 574.825.7569  
[www.claytonmiddlebury.com](http://www.claytonmiddlebury.com)

**YOUR LOCAL HOME BUILDER**

Because our company has a continuous product update process, specifications, floor plan lay-out and dimensions shown on this literature are subject to change without notice or obligations. Construction and design specifications as well as features presented conceptual, therefore should not be used as actual construction data and may not be offered in all series or models. Our Retailer will provide accurate, up-to-date information on available options and specifications for your home.